



Alamanda Sudaji Bali

This incredible **Double Ikat (Songket)** handwoven shawl (size 200cm x 60cm) is made from naturally dyed organic cotton. It takes 4-5 weeks to create one double ikat shawl. Double ikat is one of Bali's rarest textiles, and requires special skill to work with as proper tension must be continuously maintained in the threads while they are on the loom. The technique results in textured textiles that have the same beautiful pattern on each side. In the Buleleng region in north Bali where Alamanda is located only a handful of skilled weavers can weave double ikat.

Price: 90 Euros

Can be shipped anywhere.





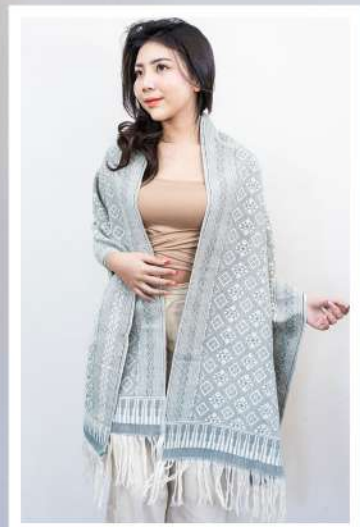
Alamanda Sudaji Bali

This incredible **Double Ikat (Songket)** handwoven shawl (size 200cm x 60cm) is made from naturally dyed organic cotton. It takes 4-5 weeks to create one double ikat shawl. Double ikat is one of Bali's rarest textiles, and requires special skill to work with as proper tension must be continuously maintained in the threads while they are on the loom.

The technique results in textured textiles that have the same beautiful pattern on each side. In the Buleleng region in north Bali where Alamanda is located only a handful of skilled weavers can weave double ikat.

Price: 90 Euros

Can be shipped anywhere.





Alamanda Sudaji Bali



This incredible **Double Ikat (Songket)** handwoven shawl (size 200cm x 60cm) is made from naturally dyed organic cotton. It takes 4-5 weeks to create one double ikat shawl. Double ikat is one of Bali's rarest textiles, and requires special skill to work with as proper tension must be continuously maintained in the threads while they are on the loom. The technique results in textured textiles that have the same beautiful pattern on each side. In the Buleleng region in north Bali where Alamanda is located only a handful of skilled weavers can weave double ikat.

Price: 90 Euros

Can be shipped anywhere.



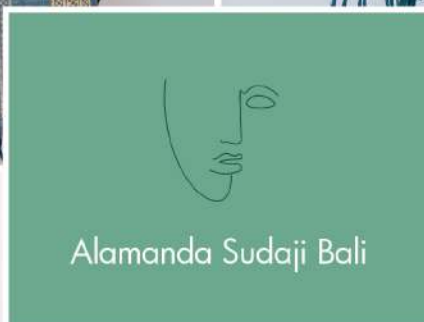
Alamanda Sudaji Bali



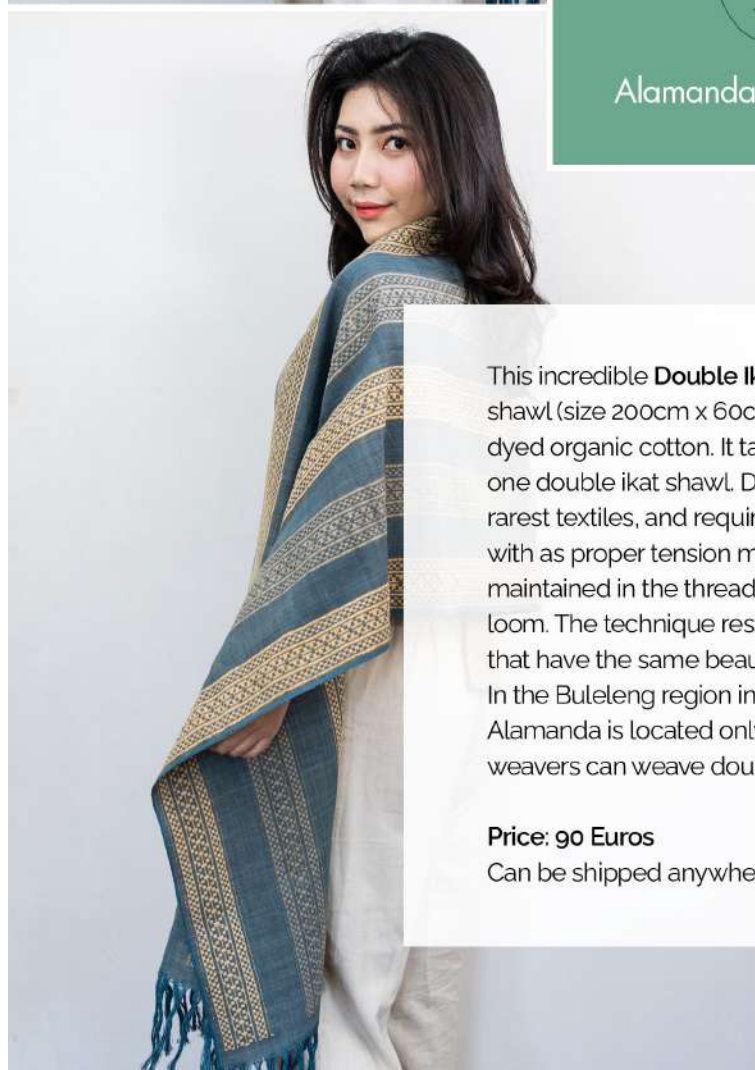
This incredible **Double Ikat (Songket)** handwoven shawl (size 200cm x 60cm) is made from naturally dyed organic cotton. It takes 4-5 weeks to create one double ikat shawl. Double ikat is one of Bali's rarest textiles, and requires special skill to work with as proper tension must be continuously maintained in the threads while they are on the loom. The technique results in textured textiles that have the same beautiful pattern on each side. In the Buleleng region in north Bali where Alamanda is located only a handful of skilled weavers can weave double ikat.

Price: 90 Euros

Can be shipped anywhere.



Alamanda Sudaji Bali



This incredible **Double Ikat (Songket)** handwoven shawl (size 200cm x 60cm) is made from naturally dyed organic cotton. It takes 4-5 weeks to create one double ikat shawl. Double ikat is one of Bali's rarest textiles, and requires special skill to work with as proper tension must be continuously maintained in the threads while they are on the loom. The technique results in textured textiles that have the same beautiful pattern on each side. In the Buleleng region in north Bali where Alamanda is located only a handful of skilled weavers can weave double ikat.

Price: 90 Euros
Can be shipped anywhere.



Alamanda Sudaji Bali



This incredible **Double Ikat (Songket)** handwoven shawl (size 200cm x 60cm) is made from naturally dyed organic cotton. It takes 4-5 weeks to create one double ikat shawl. Double ikat is one of Bali's rarest textiles, and requires special skill to work with as proper tension must be continuously maintained in the threads while they are on the loom. The technique results in textured textiles that have the same beautiful pattern on each side. In the Buleleng region in north Bali where Alamanda is located only a handful of skilled weavers can weave double ikat.

Price: 90 Euros

Can be shipped anywhere.



This incredible **Double Ikat (Songket)** handwoven shawl (size 200cm x 60cm) is made from naturally dyed organic cotton. It takes 4-5 weeks to create one double ikat shawl. Double ikat is one of Bali's rarest textiles, and requires special skill to work with as proper tension must be continuously maintained in the threads while they are on the loom. The technique results in textured textiles that have the same beautiful pattern on each side. In the Buleleng region in north Bali where Alamanda is located only a handful of skilled weavers can weave double ikat.

Price: 90 Euros

Can be shipped anywhere.





Alamanda Sudaji Bali

This incredible **Double Ikat (Songket)** handwoven shawl (size 200cm x 60cm) is made from naturally dyed organic cotton. It takes 4-5 weeks to create one double ikat shawl. Double ikat is one of Bali's rarest textiles, and requires special skill to work with as proper tension must be continuously maintained in the threads while they are on the loom. The technique results in textured textiles that have the same beautiful pattern on each side. In the Buleleng region in north Bali where Alamanda is located only a handful of skilled weavers can weave double ikat.

Price: 90 Euros

Can be shipped anywhere.





Alamanda Sudaji Bali

This incredible **Double Ikat (Songket)** handwoven shawl (size 200cm x 60cm) is made from naturally dyed organic cotton. It takes 4-5 weeks to create one double ikat shawl. Double ikat is one of Bali's rarest textiles, and requires special skill to work with as proper tension must be continuously maintained in the threads while they are on the loom. The technique results in textured textiles that have the same beautiful pattern on each side. In the Buleleng region in north Bali where Alamanda is located only a handful of skilled weavers can weave double ikat.

Price: 90 Euros

Can be shipped anywhere.





Alamanda Sudaji Bali



This incredible **Double Ikat (Songket)** handwoven shawl (size 200cm x 60cm) is made from naturally dyed organic cotton. It takes 4-5 weeks to create one double ikat shawl. Double ikat is one of Bali's rarest textiles, and requires special skill to work with as proper tension must be continuously maintained in the threads while they are on the loom. The technique results in textured textiles that have the same beautiful pattern on each side. In the Buleleng region in north Bali where Alamanda is located only a handful of skilled weavers can weave double ikat.

Price: 90 Euros

Can be shipped anywhere.



Alamanda Sudaji Bali

This incredible **Double Ikat (Songket)** handwoven shawl (size 200cm x 60cm) is made from naturally dyed organic cotton. It takes 4-5 weeks to create one double ikat shawl. Double ikat is one of Bali's rarest textiles, and requires special skill to work with as proper tension must be continuously maintained in the threads while they are on the loom. The technique results in textured textiles that have the same beautiful pattern on each side. In the Buleleng region in north Bali where Alamanda is located only a handful of skilled weavers can weave double ikat.

Price: 90 Euros

Can be shipped anywhere.





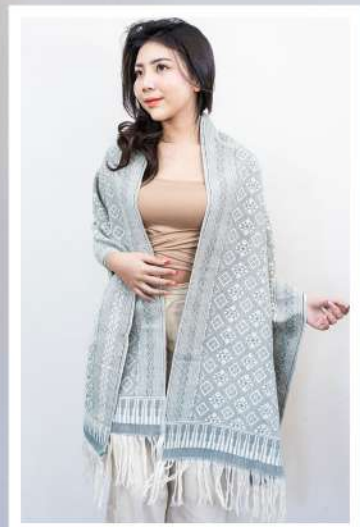
Alamanda Sudaji Bali

This incredible **Double Ikat (Songket)** handwoven shawl (size 200cm x 60cm) is made from naturally dyed organic cotton. It takes 4-5 weeks to create one double ikat shawl. Double ikat is one of Bali's rarest textiles, and requires special skill to work with as proper tension must be continuously maintained in the threads while they are on the loom.

The technique results in textured textiles that have the same beautiful pattern on each side. In the Buleleng region in north Bali where Alamanda is located only a handful of skilled weavers can weave double ikat.

Price: 90 Euros

Can be shipped anywhere.





Alamanda Sudaji Bali



This incredible **Double Ikat (Songket)** handwoven shawl (size 200cm x 60cm) is made from naturally dyed organic cotton. It takes 4-5 weeks to create one double ikat shawl. Double ikat is one of Bali's rarest textiles, and requires special skill to work with as proper tension must be continuously maintained in the threads while they are on the loom. The technique results in textured textiles that have the same beautiful pattern on each side. In the Buleleng region in north Bali where Alamanda is located only a handful of skilled weavers can weave double ikat.

Price: 90 Euros

Can be shipped anywhere.



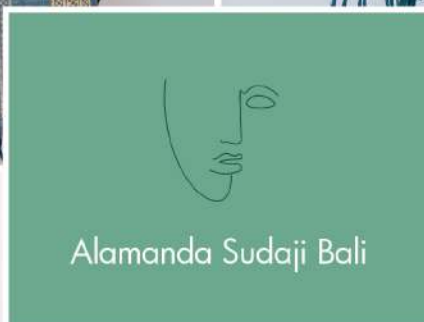
Alamanda Sudaji Bali



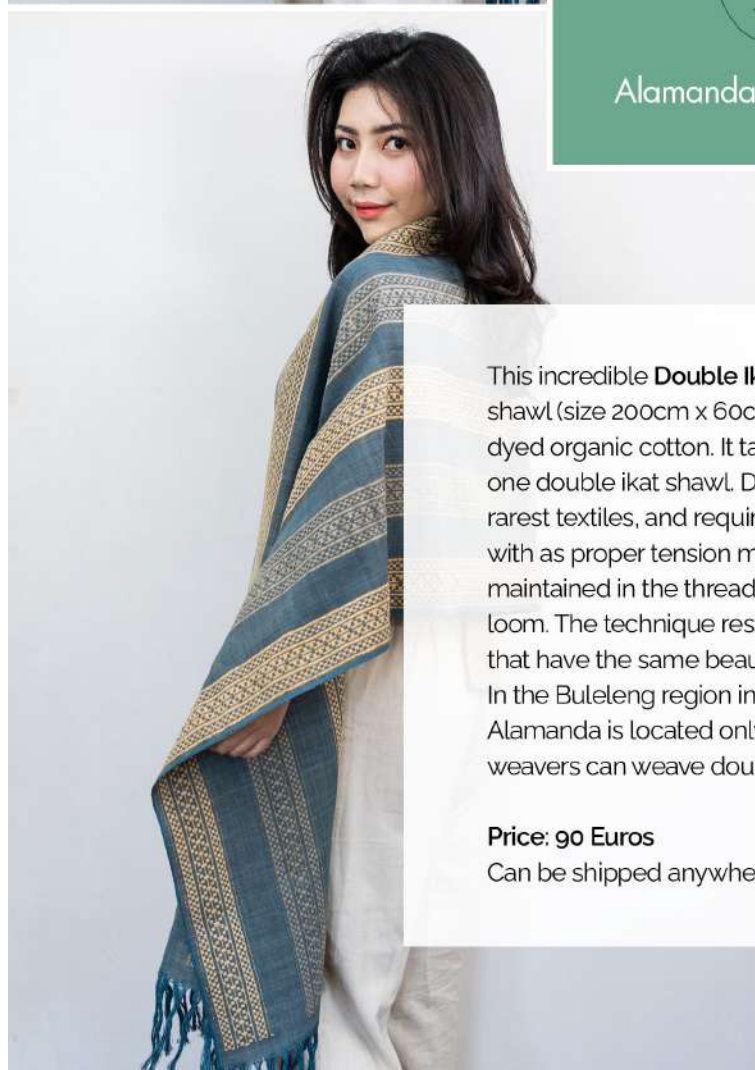
This incredible **Double Ikat (Songket)** handwoven shawl (size 200cm x 60cm) is made from naturally dyed organic cotton. It takes 4-5 weeks to create one double ikat shawl. Double ikat is one of Bali's rarest textiles, and requires special skill to work with as proper tension must be continuously maintained in the threads while they are on the loom. The technique results in textured textiles that have the same beautiful pattern on each side. In the Buleleng region in north Bali where Alamanda is located only a handful of skilled weavers can weave double ikat.

Price: 90 Euros

Can be shipped anywhere.



Alamanda Sudaji Bali



This incredible **Double Ikat (Songket)** handwoven shawl (size 200cm x 60cm) is made from naturally dyed organic cotton. It takes 4-5 weeks to create one double ikat shawl. Double ikat is one of Bali's rarest textiles, and requires special skill to work with as proper tension must be continuously maintained in the threads while they are on the loom. The technique results in textured textiles that have the same beautiful pattern on each side. In the Buleleng region in north Bali where Alamanda is located only a handful of skilled weavers can weave double ikat.

Price: 90 Euros
Can be shipped anywhere.



Alamanda Sudaji Bali



This incredible **Double Ikat (Songket)** handwoven shawl (size 200cm x 60cm) is made from naturally dyed organic cotton. It takes 4-5 weeks to create one double ikat shawl. Double ikat is one of Bali's rarest textiles, and requires special skill to work with as proper tension must be continuously maintained in the threads while they are on the loom. The technique results in textured textiles that have the same beautiful pattern on each side. In the Buleleng region in north Bali where Alamanda is located only a handful of skilled weavers can weave double ikat.

Price: 90 Euros

Can be shipped anywhere.





This incredible **Double Ikat (Songket)** handwoven shawl (size 200cm x 60cm) is made from naturally dyed organic cotton. It takes 4-5 weeks to create one double ikat shawl. Double ikat is one of Bali's rarest textiles, and requires special skill to work with as proper tension must be continuously maintained in the threads while they are on the loom. The technique results in textured textiles that have the same beautiful pattern on each side. In the Buleleng region in north Bali where Alamanda is located only a handful of skilled weavers can weave double ikat.

Price: 90 Euros

Can be shipped anywhere.





Alamanda Sudaji Bali

This incredible **Double Ikat (Songket)** handwoven shawl (size 200cm x 60cm) is made from naturally dyed organic cotton. It takes 4-5 weeks to create one double ikat shawl. Double ikat is one of Bali's rarest textiles, and requires special skill to work with as proper tension must be continuously maintained in the threads while they are on the loom. The technique results in textured textiles that have the same beautiful pattern on each side. In the Buleleng region in north Bali where Alamanda is located only a handful of skilled weavers can weave double ikat.

Price: 90 Euros

Can be shipped anywhere.





Alamanda Sudaji Bali

This incredible **Double Ikat (Songket)** handwoven shawl (size 200cm x 60cm) is made from naturally dyed organic cotton. It takes 4-5 weeks to create one double ikat shawl. Double ikat is one of Bali's rarest textiles, and requires special skill to work with as proper tension must be continuously maintained in the threads while they are on the loom. The technique results in textured textiles that have the same beautiful pattern on each side. In the Buleleng region in north Bali where Alamanda is located only a handful of skilled weavers can weave double ikat.

Price: 90 Euros

Can be shipped anywhere.





Alamanda Sudaji Bali



This incredible **Double Ikat (Songket)** handwoven shawl (size 200cm x 60cm) is made from naturally dyed organic cotton. It takes 4-5 weeks to create one double ikat shawl. Double ikat is one of Bali's rarest textiles, and requires special skill to work with as proper tension must be continuously maintained in the threads while they are on the loom. The technique results in textured textiles that have the same beautiful pattern on each side. In the Buleleng region in north Bali where Alamanda is located only a handful of skilled weavers can weave double ikat.

Price: 90 Euros

Can be shipped anywhere.



Alamanda Sudaji Bali

This incredible **Double Ikat (Songket)** handwoven shawl (size 200cm x 60cm) is made from naturally dyed organic cotton. It takes 4-5 weeks to create one double ikat shawl. Double ikat is one of Bali's rarest textiles, and requires special skill to work with as proper tension must be continuously maintained in the threads while they are on the loom. The technique results in textured textiles that have the same beautiful pattern on each side. In the Buleleng region in north Bali where Alamanda is located only a handful of skilled weavers can weave double ikat.

Price: 90 Euros

Can be shipped anywhere.





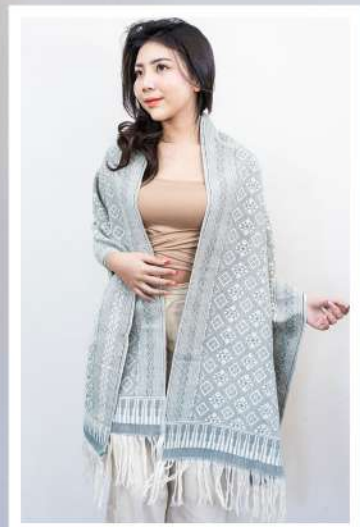
Alamanda Sudaji Bali

This incredible **Double Ikat (Songket)** handwoven shawl (size 200cm x 60cm) is made from naturally dyed organic cotton. It takes 4-5 weeks to create one double ikat shawl. Double ikat is one of Bali's rarest textiles, and requires special skill to work with as proper tension must be continuously maintained in the threads while they are on the loom.

The technique results in textured textiles that have the same beautiful pattern on each side. In the Buleleng region in north Bali where Alamanda is located only a handful of skilled weavers can weave double ikat.

Price: 90 Euros

Can be shipped anywhere.





Alamanda Sudaji Bali



This incredible **Double Ikat (Songket)** handwoven shawl (size 200cm x 60cm) is made from naturally dyed organic cotton. It takes 4-5 weeks to create one double ikat shawl. Double ikat is one of Bali's rarest textiles, and requires special skill to work with as proper tension must be continuously maintained in the threads while they are on the loom. The technique results in textured textiles that have the same beautiful pattern on each side. In the Buleleng region in north Bali where Alamanda is located only a handful of skilled weavers can weave double ikat.

Price: 90 Euros

Can be shipped anywhere.



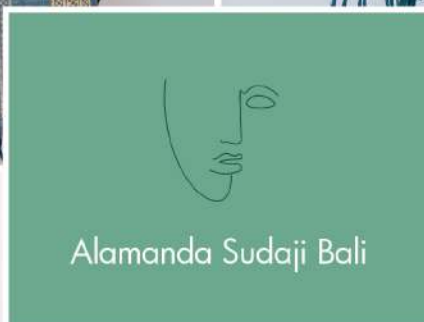
Alamanda Sudaji Bali



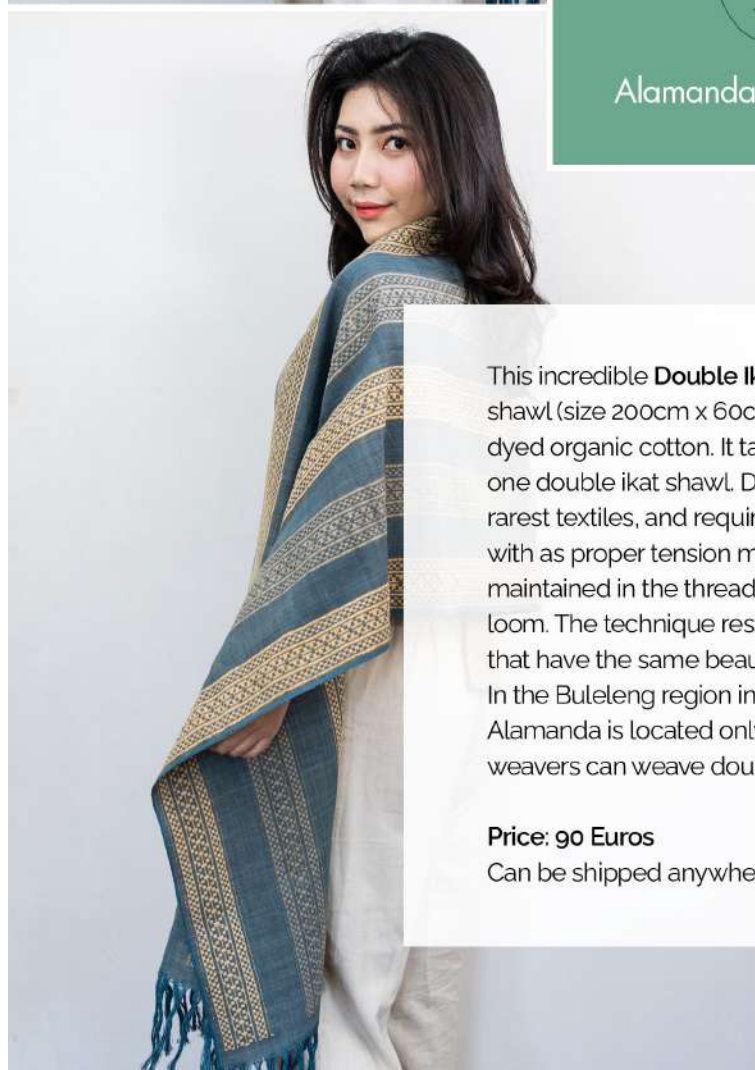
This incredible **Double Ikat (Songket)** handwoven shawl (size 200cm x 60cm) is made from naturally dyed organic cotton. It takes 4-5 weeks to create one double ikat shawl. Double ikat is one of Bali's rarest textiles, and requires special skill to work with as proper tension must be continuously maintained in the threads while they are on the loom. The technique results in textured textiles that have the same beautiful pattern on each side. In the Buleleng region in north Bali where Alamanda is located only a handful of skilled weavers can weave double ikat.

Price: 90 Euros

Can be shipped anywhere.



Alamanda Sudaji Bali



This incredible **Double Ikat (Songket)** handwoven shawl (size 200cm x 60cm) is made from naturally dyed organic cotton. It takes 4-5 weeks to create one double ikat shawl. Double ikat is one of Bali's rarest textiles, and requires special skill to work with as proper tension must be continuously maintained in the threads while they are on the loom. The technique results in textured textiles that have the same beautiful pattern on each side. In the Buleleng region in north Bali where Alamanda is located only a handful of skilled weavers can weave double ikat.

Price: 90 Euros
Can be shipped anywhere.



Alamanda Sudaji Bali



This incredible **Double Ikat (Songket)** handwoven shawl (size 200cm x 60cm) is made from naturally dyed organic cotton. It takes 4-5 weeks to create one double ikat shawl. Double ikat is one of Bali's rarest textiles, and requires special skill to work with as proper tension must be continuously maintained in the threads while they are on the loom. The technique results in textured textiles that have the same beautiful pattern on each side. In the Buleleng region in north Bali where Alamanda is located only a handful of skilled weavers can weave double ikat.

Price: 90 Euros

Can be shipped anywhere.





This incredible **Double Ikat (Songket)** handwoven shawl (size 200cm x 60cm) is made from naturally dyed organic cotton. It takes 4-5 weeks to create one double ikat shawl. Double ikat is one of Bali's rarest textiles, and requires special skill to work with as proper tension must be continuously maintained in the threads while they are on the loom. The technique results in textured textiles that have the same beautiful pattern on each side. In the Buleleng region in north Bali where Alamanda is located only a handful of skilled weavers can weave double ikat.

Price: 90 Euros

Can be shipped anywhere.





Alamanda Sudaji Bali

This incredible **Double Ikat (Songket)** handwoven shawl (size 200cm x 60cm) is made from naturally dyed organic cotton. It takes 4-5 weeks to create one double ikat shawl. Double ikat is one of Bali's rarest textiles, and requires special skill to work with as proper tension must be continuously maintained in the threads while they are on the loom. The technique results in textured textiles that have the same beautiful pattern on each side. In the Buleleng region in north Bali where Alamanda is located only a handful of skilled weavers can weave double ikat.

Price: 90 Euros

Can be shipped anywhere.





Alamanda Sudaji Bali

This incredible **Double Ikat (Songket)** handwoven shawl (size 200cm x 60cm) is made from naturally dyed organic cotton. It takes 4-5 weeks to create one double ikat shawl. Double ikat is one of Bali's rarest textiles, and requires special skill to work with as proper tension must be continuously maintained in the threads while they are on the loom. The technique results in textured textiles that have the same beautiful pattern on each side. In the Buleleng region in north Bali where Alamanda is located only a handful of skilled weavers can weave double ikat.

Price: 90 Euros

Can be shipped anywhere.





Alamanda Sudaji Bali



This incredible **Double Ikat (Songket)** handwoven shawl (size 200cm x 60cm) is made from naturally dyed organic cotton. It takes 4-5 weeks to create one double ikat shawl. Double ikat is one of Bali's rarest textiles, and requires special skill to work with as proper tension must be continuously maintained in the threads while they are on the loom. The technique results in textured textiles that have the same beautiful pattern on each side. In the Buleleng region in north Bali where Alamanda is located only a handful of skilled weavers can weave double ikat.

Price: 90 Euros

Can be shipped anywhere.



Alamanda Sudaji Bali

This incredible **Double Ikat (Songket)** handwoven shawl (size 200cm x 60cm) is made from naturally dyed organic cotton. It takes 4-5 weeks to create one double ikat shawl. Double ikat is one of Bali's rarest textiles, and requires special skill to work with as proper tension must be continuously maintained in the threads while they are on the loom. The technique results in textured textiles that have the same beautiful pattern on each side. In the Buleleng region in north Bali where Alamanda is located only a handful of skilled weavers can weave double ikat.

Price: 90 Euros

Can be shipped anywhere.





Alamanda Sudaji Bali

This incredible **Double Ikat (Songket)** handwoven shawl (size 200cm x 60cm) is made from naturally dyed organic cotton. It takes 4-5 weeks to create one double ikat shawl. Double ikat is one of Bali's rarest textiles, and requires special skill to work with as proper tension must be continuously maintained in the threads while they are on the loom.

The technique results in textured textiles that have the same beautiful pattern on each side. In the Buleleng region in north Bali where Alamanda is located only a handful of skilled weavers can weave double ikat.

Price: 90 Euros

Can be shipped anywhere.





Alamanda Sudaji Bali



This incredible **Double Ikat (Songket)** handwoven shawl (size 200cm x 60cm) is made from naturally dyed organic cotton. It takes 4-5 weeks to create one double ikat shawl. Double ikat is one of Bali's rarest textiles, and requires special skill to work with as proper tension must be continuously maintained in the threads while they are on the loom. The technique results in textured textiles that have the same beautiful pattern on each side. In the Buleleng region in north Bali where Alamanda is located only a handful of skilled weavers can weave double ikat.

Price: 90 Euros

Can be shipped anywhere.



Alamanda Sudaji Bali

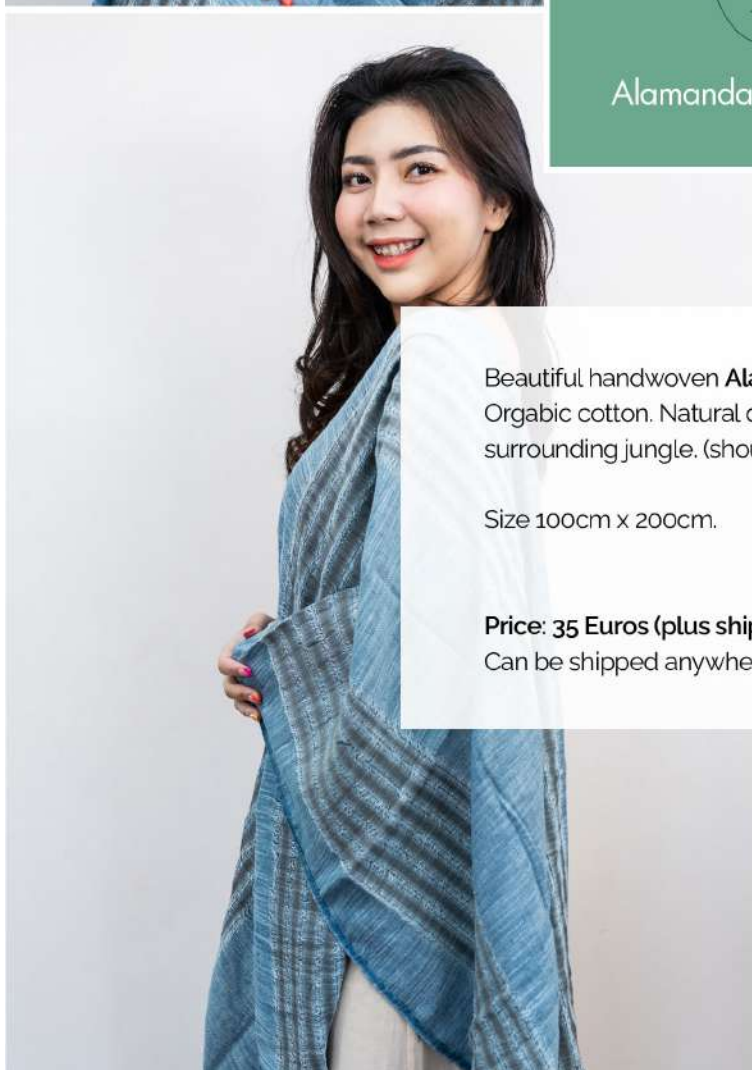
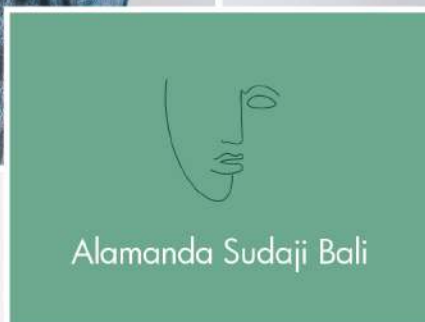


Beautiful handwoven **Alamanda scarf/shawl**.
Organic cotton. Natural dye made from plants in the
surrounding jungle. (should be washed by hand).

Size 100cm x 200cm.

Price: 35 Euros (plus shipping cost).

Can be shipped anywhere.



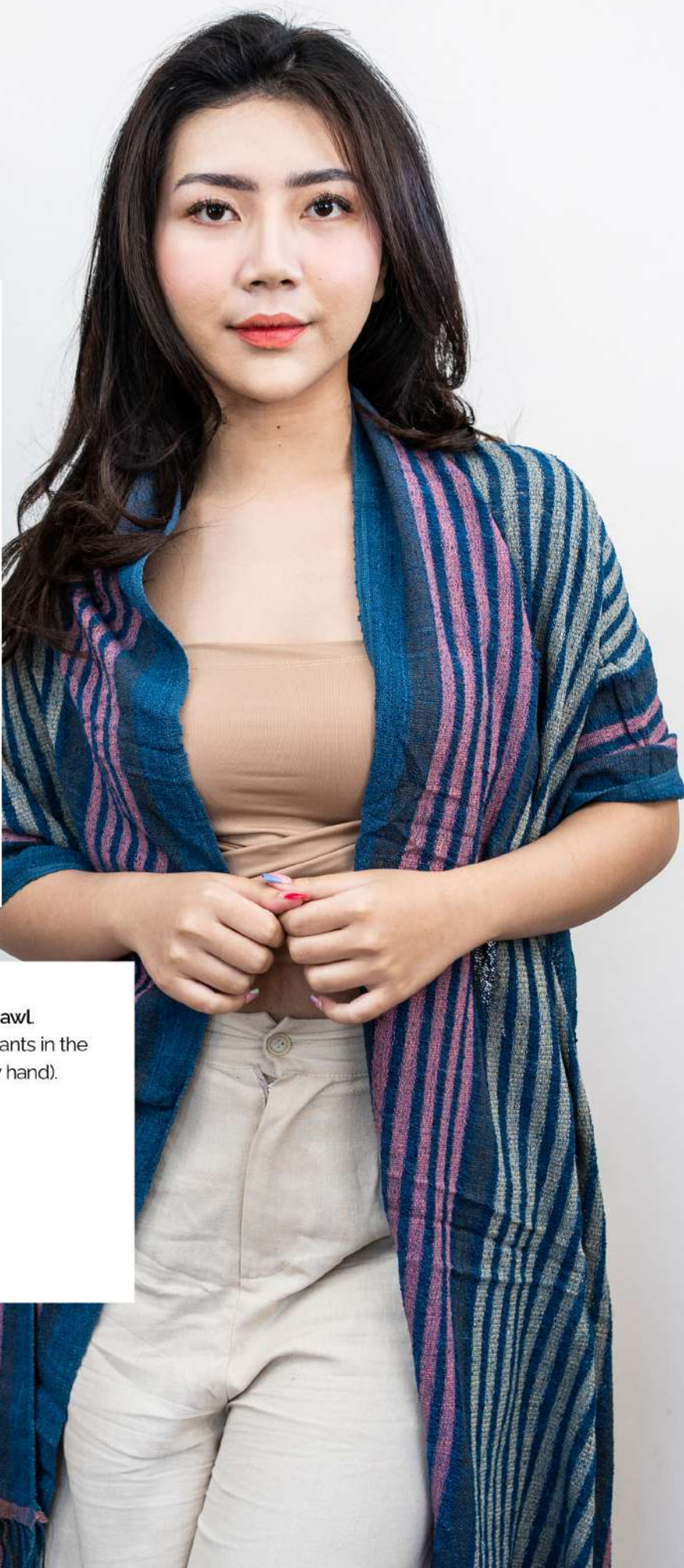
Beautiful handwoven **Alamanda scarf/shawl**.
Organic cotton. Natural dye made from plants in the
surrounding jungle. (should be washed by hand).

Size 100cm x 200cm.

Price: 35 Euros (plus shipping cost).
Can be shipped anywhere.



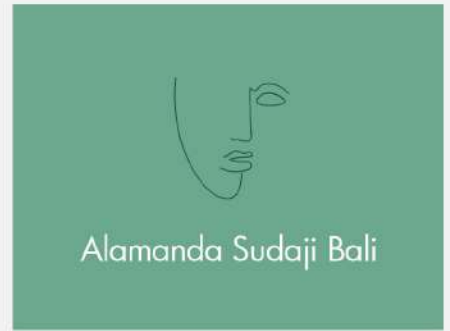
Alamanda Sudaji Bali



Beautiful handwoven **Alamanda scarf/shawl**.
Organic cotton. Natural dye made from plants in the
surrounding jungle. (should be washed by hand).

Size 100cm x 200cm.

Price: 35 Euros (plus shipping cost).
Can be shipped anywhere.



Beautiful handwoven **Alamanda scarf/shawl**.
Organic cotton. Natural dye made from plants in the
surrounding jungle. (should be washed by hand).

Size 100cm x 200cm.

Price: 35 Euros (plus shipping cost).
Can be shipped anywhere.





Alamanda Sudaji Bali

Beautiful handwoven **Alamanda scarf/shawl**.
Organic cotton. Natural dye made from plants in the
surrounding jungle. (should be washed by hand).

Size 100cm x 200cm.

Price: 35 Euros (plus shipping cost).
Can be shipped anywhere.





Alamanda Sudaji Bali

Beautiful handwoven **Alamanda scarf/shawl**.
Organic cotton. Natural dye made from plants in the
surrounding jungle. (should be washed by hand).

Size 100cm x 200cm.

Price: 35 Euros (plus shipping cost).
Can be shipped anywhere.





Alamanda Sudaji Bali



Beautiful handwoven **Alamanda scarf/shawl**.
Organic cotton. Natural dye made from plants in the
surrounding jungle. (should be washed by hand).

Size 100cm x 200cm.

Price: 35 Euros (plus shipping cost).
Can be shipped anywhere.



Alamanda Sudaji Bali

Beautiful handwoven **Alamanda scarf/shawl**.
Organic cotton. Natural dye made from plants in the
surrounding jungle. (should be washed by hand).

Size 100cm x 200cm.

Price: 35 Euros (plus shipping cost).
Can be shipped anywhere.





Alamanda Sudaji Bali

Beautiful handwoven **Alamanda scarf/shawl**.
Organic cotton. Natural dye made from plants in the
surrounding jungle. (should be washed by hand).

Size 100cm x 200cm.

Price: 35 Euros (plus shipping cost).
Can be shipped anywhere.





Alamanda Sudaji Bali



Beautiful handwoven **Alamanda scarf/shawl**.
Organic cotton. Natural dye made from plants in the
surrounding jungle. (should be washed by hand).

Size 100cm x 200cm.

Price: 35 Euros (plus shipping cost).
Can be shipped anywhere.



Alamanda Sudaji Bali



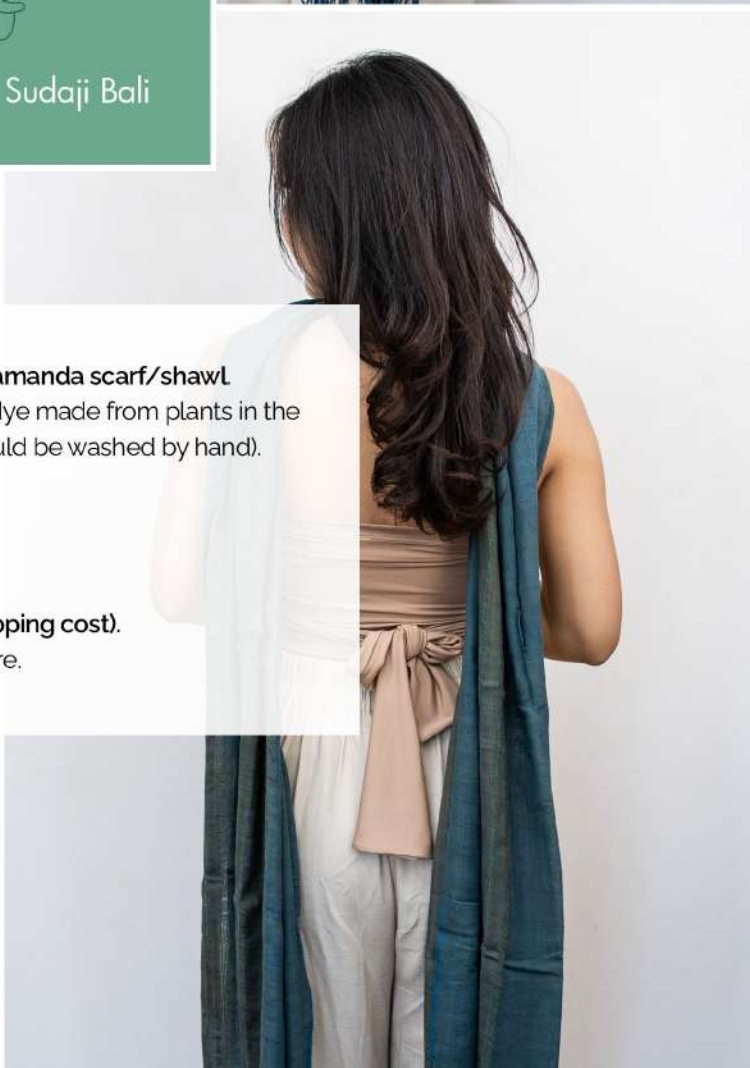
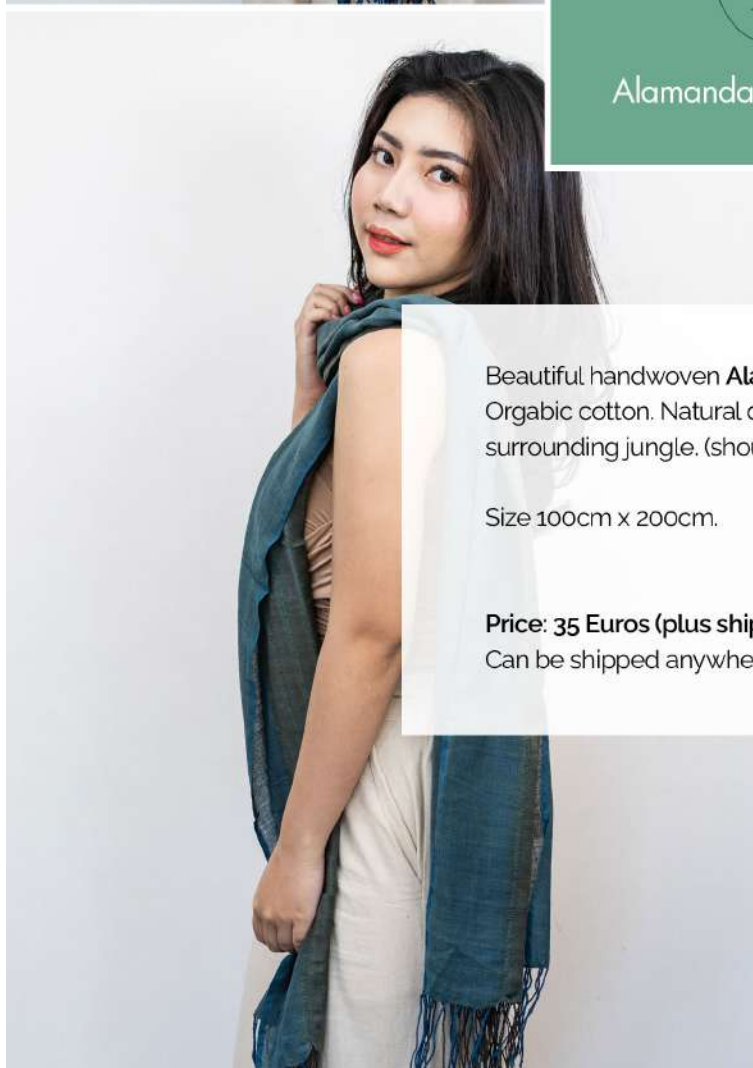
Beautiful handwoven **Alamanda scarf/shawl**.
Organic cotton. Natural dye made from plants in the
surrounding jungle. (should be washed by hand).

Size 100cm x 200cm.

Price: 35 Euros (plus shipping cost).
Can be shipped anywhere.



Alamanda Sudaji Bali



Beautiful handwoven **Alamanda scarf/shawl**.
Organic cotton. Natural dye made from plants in the
surrounding jungle. (should be washed by hand).

Size 100cm x 200cm.

Price: 35 Euros (plus shipping cost).
Can be shipped anywhere.



Alamanda Sudaji Bali

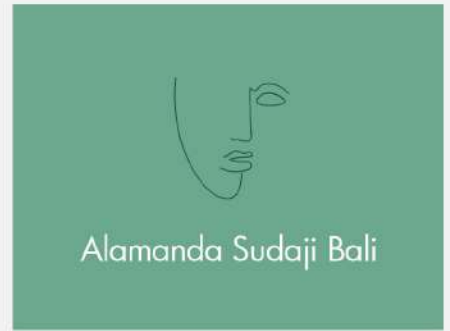


Beautiful handwoven **Alamanda scarf/shawl**.
Organic cotton. Natural dye made from plants in the
surrounding jungle. (should be washed by hand).

Size 100cm x 200cm.

Price: 35 Euros (plus shipping cost).
Can be shipped anywhere.





Beautiful handwoven **Alamanda scarf/shawl**.
Organic cotton. Natural dye made from plants in the
surrounding jungle. (should be washed by hand).

Size 100cm x 200cm.

Price: 35 Euros (plus shipping cost).
Can be shipped anywhere.





Alamanda Sudaji Bali



Beautiful handwoven **Alamanda scarf/shawl**.
Organic cotton. Natural dye made from plants in the
surrounding jungle. (should be washed by hand).

Size 100cm x 200cm.

Price: 35 Euros (plus shipping cost).
Can be shipped anywhere.





Alamanda Sudaji Bali



Beautiful handwoven **Alamanda scarf/shawl**
Organic cotton. Natural dye made from plants in the
surrounding jungle. (should be washed by hand).

Size 100cm x 200cm.

Price: 35 Euros (plus shipping cost).
Can be shipped anywhere.



Alamanda Sudaji Bali



Beautiful handwoven **Alamanda scarf/shawl**.
Organic cotton. Natural dye made from plants in the
surrounding jungle. (should be washed by hand).

Size 100cm x 200cm.

Price: 35 Euros (plus shipping cost).
Can be shipped anywhere.



Alamanda Sudaji Bali



Beautiful handwoven **Alamanda scarf/shawl**.
Organic cotton. Natural dye made from plants in the
surrounding jungle. (should be washed by hand).

Size 100cm x 200cm.

Price: 35 Euros (plus shipping cost).
Can be shipped anywhere.





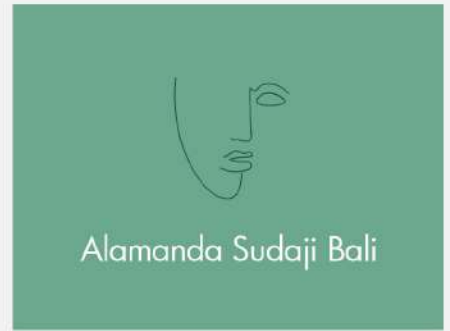
Alamanda Sudaji Bali

Beautiful handwoven **Alamanda scarf/shawl**.
Organic cotton. Natural dye made from plants in the
surrounding jungle. (should be washed by hand).

Size 100cm x 200cm.

Price: 35 Euros (plus shipping cost).
Can be shipped anywhere.





Beautiful handwoven **Alamanda scarf/shawl**.
Organic cotton. Natural dye made from plants in the
surrounding jungle. (should be washed by hand).

Size 100cm x 200cm.

Price: 35 Euros (plus shipping cost).
Can be shipped anywhere.





Alamanda Sudaji Bali

Beautiful handwoven **Alamanda scarf/shawl**. Organic cotton. Natural dye made from plants in the surrounding jungle. (should be washed by hand).

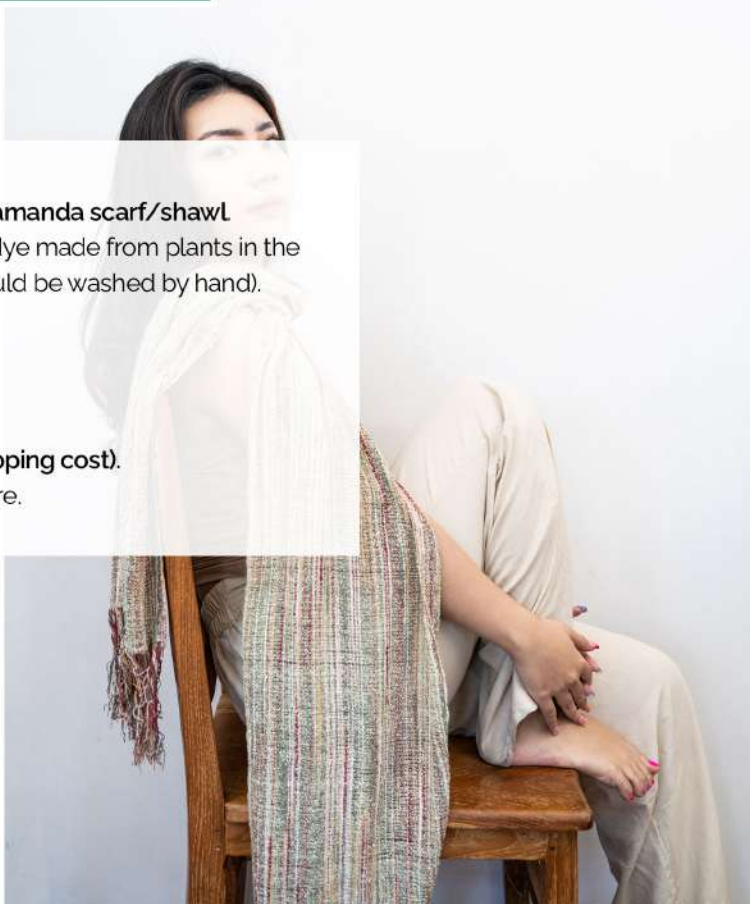
Size 100cm x 200cm.

Price: 35 Euros (plus shipping cost).

Can be shipped anywhere.



Alamanda Sudaji Bali



Beautiful handwoven **Alamanda scarf/shawl**.
Organic cotton. Natural dye made from plants in the
surrounding jungle. (should be washed by hand).

Size 100cm x 200cm.

Price: 35 Euros (plus shipping cost).
Can be shipped anywhere.



Alamanda Sudaji Bali

Beautiful handwoven **Alamanda scarf/shawl**.
Organic cotton. Natural dye made from plants in the
surrounding jungle. (should be washed by hand).

Size 100cm x 200cm.

Price: 35 Euros (plus shipping cost).
Can be shipped anywhere.





Alamanda Sudaji Bali



Beautiful handwoven **Alamanda scarf/shawl**.
Organic cotton. Natural dye made from plants in the
surrounding jungle. (should be washed by hand).

Size 100cm x 200cm.

Price: 35 Euros (plus shipping cost).
Can be shipped anywhere.

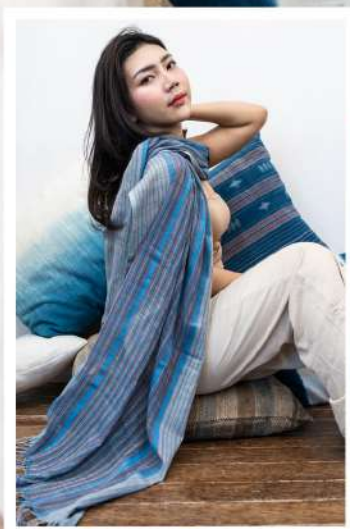


Alamanda Sudaji Bali

Beautiful handwoven **Alamanda scarf/shawl**. Organic cotton. Natural dye made from plants in the surrounding jungle. (should be washed by hand).

Size 100cm x 200cm.

Price: 35 Euros (plus shipping cost).
Can be shipped anywhere.





Alamanda Sudaji Bali

Beautiful handwoven **Alamanda scarf/shawl**.
Organic cotton. Natural dye made from plants in the
surrounding jungle. (should be washed by hand).

Size 100cm x 200cm.

Price: 35 Euros (plus shipping cost).
Can be shipped anywhere.





Alamanda Sudaji Bali



Beautiful handwoven **Alamanda scarf/shawl**.
Organic cotton. Natural dye made from plants in the
surrounding jungle. (should be washed by hand).

Size 100cm x 200cm.

Price: 35 Euros (plus shipping cost).
Can be shipped anywhere.





Alamanda Sudaji Bali

Beautiful handwoven **Alamanda scarf/shawl**.
Organic cotton. Natural dye made from plants in the
surrounding jungle. (should be washed by hand).

Size 100cm x 200cm.

Price: 35 Euros (plus shipping cost).
Can be shipped anywhere.





Alamanda Sudaji Bali



Beautiful handwoven **Alamanda scarf/shawl**.
Organic cotton. Natural dye made from plants in the
surrounding jungle. (should be washed by hand).

Size 100cm x 200cm.

Price: 35 Euros (plus shipping cost).
Can be shipped anywhere.



Alamanda Sudaji Bali



Beautiful handwoven **Alamanda scarf/shawl**
Organic cotton. Natural dye made from plants in the
surrounding jungle. (should be washed by hand).

Size 100cm x 200cm.

Price: 35 Euros (plus shipping cost).
Can be shipped anywhere.



Alamanda Sudaji Bali

Email : parwati33@gmail.com

Telp: +6281139617719